

# JARGY CO., LTD.

## Test Report

Model : CBL-HFPD3igMBS-3m

Ver : 1.0

Date : 2016/2/4

Camera Brand Name : IDS

### Test Platform

Type	PC		
Model	GIGABYTE Z87-HD3		
OS	Windows 7 Home Premium 64Bit		
CPU	Intel Core i3-4130		
HDD	SATA III 500GB		
RAM	DDR3 4GB		
USB 3.0	PCH 6 Ports(Intel Z87 Native)		


Tested Camera : UI-3370CP-C-HQ

Tested time : 72h



uEye Cockpit - UI337xCP-C ID: 1 - SerNo.: 4102781785

File View uEye Profiles Help

Host Performance

Frame Timing (only in DIB mode)

CPU load	65 %
FPS from Camera	80.9 fps
Max FPS possible by CPU	119.1 fps
Frame calculation time	8.4 ms
Frame delay time	12.4 ms

Timing Ratio 0.68

Settings OK Settings critical

Use OpenMP Default

Current software settings

Image size	2048 x 2048
Auto exposure	OFF
Auto white balance	ON
Auto gain	OFF
Edge enhancement	OFF
LUT	OFF
Gamma	OFF
Skip frames	
Auto exposure/gain	4
Auto white balance	4

Capture failures

API no destination memory:	0
API conversion failed:	0
API image locked:	0
Driver out of buffers:	0
Driver device not ready:	0
USB transfer failed:	0
Device timeout:	0
Device buffer overrun:	0
Device missed images:	0
Device frame capture failed:	0
Total failures:	0

Reset Errors

Bandwidth

Max interface bandwidth:	380.0 MB/s
Peak camera bandwidth	399.0 MB/s

Settings OK Settings critical

Camera buffer info

Camera image buffers	0
Used	0
0%	100%
Resend packets	0

Device temperature: 59.0° C (138.2° F) Close

BGRA8 (2048 x 2048) Frames: 21031125 Display: 8319772 Failed: 0 Recor Transfer: OK FPS: 80.91

# JARGY CO., LTD.

## Test Report

Model : CBL-HFD3igMBS-5m

Ver : 1.0

Date : 2016/2/22

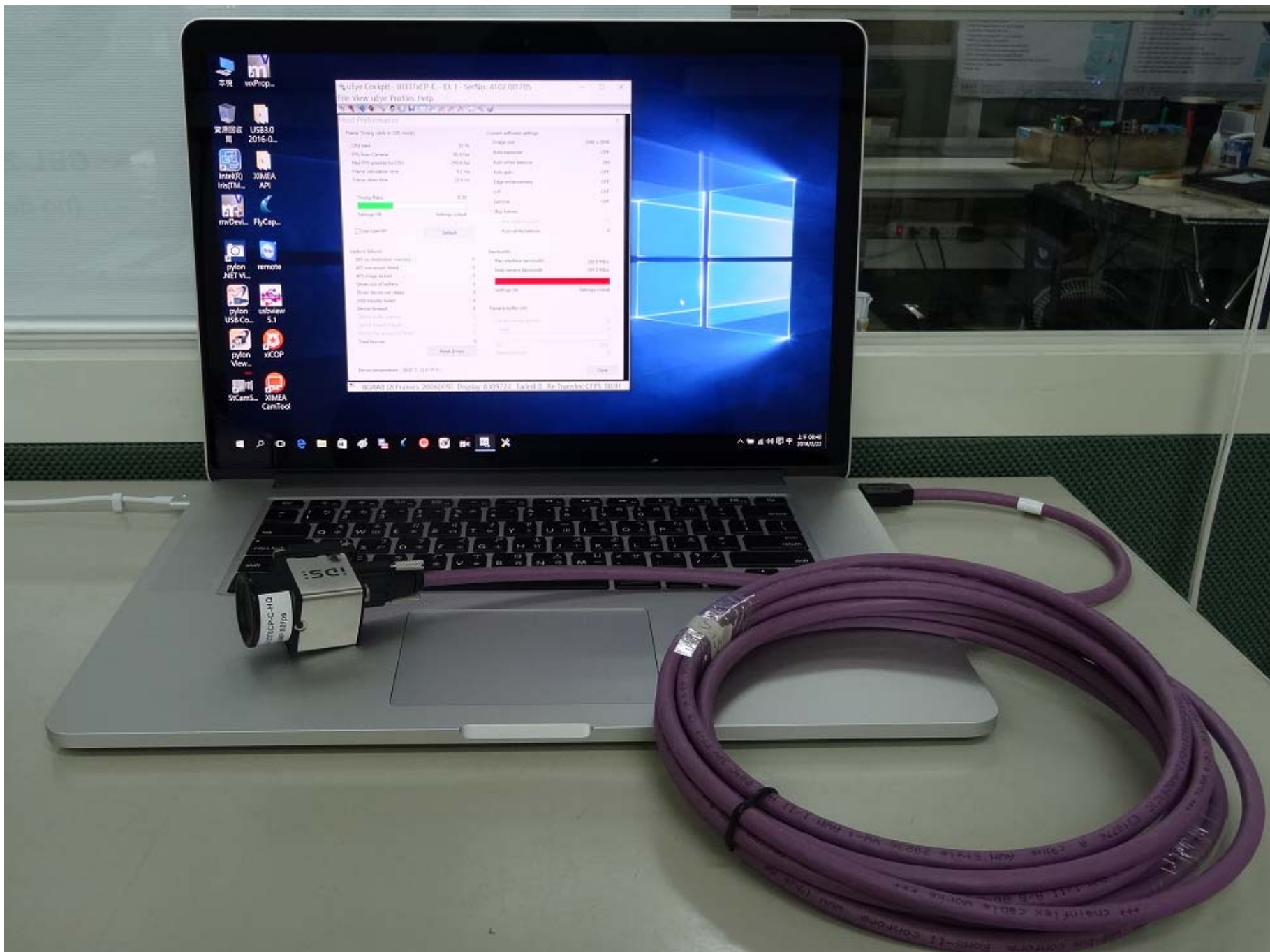
Camera Brand Name : IDS

### Test Platform

Type	NB		
Model	MAC		
OS	Windows 10 Pro 64-bit		
CPU	Intel Core i7-4770HQ		
HDD	SATA III SSD 256GB		
RAM	DDR3 16GB		
USB 3.0	PCH 2 Ports(Intel Z87 Native)		


Tested Camera : UI-3370CP-C-HQ

Tested time : 72h



System Performance

Power Usage (only on 64-bit)

Component	Usage	Control Panel Link
CPU load	30%	Control Panel
GPU (non-Gaming)	80%	Control Panel
GPU (Gaming)	0%	Control Panel
Private memory usage	42%	Control Panel
System memory usage	27%	Control Panel
System Idle	67%	Control Panel
System Ready	0%	Control Panel
System Unavailable	0%	Control Panel
System Standby	0%	Control Panel
System Hibernating	0%	Control Panel
System Off	0%	Control Panel

System Idle: 67% (Control Panel)

System Ready: 0% (Control Panel)

System Unavailable: 0% (Control Panel)

System Standby: 0% (Control Panel)

System Hibernating: 0% (Control Panel)

System Off: 0% (Control Panel)

System Idle: 67% (Control Panel)

System Ready: 0% (Control Panel)

System Unavailable: 0% (Control Panel)

System Standby: 0% (Control Panel)

System Hibernating: 0% (Control Panel)

System Off: 0% (Control Panel)



### Host Performance

#### Frame Timing (only in DIB mode)

CPU load	35 %
FPS from Camera	80.9 fps
Max FPS possible by CPU	240.8 fps
Frame calculation time	4.2 ms
Frame delay time	12.4 ms

Timing Ratio: 0.34

Settings OK Settings critical

Use OpenMP Default

#### Current software settings

Image size	2048 x 2048
Auto exposure	OFF
Auto white balance	ON
Auto gain	OFF
Edge enhancement	OFF
LUT	OFF
Gamma	OFF
Skip frames	
Auto exposure/gain	4
Auto white balance	4

#### Capture failures

API no destination memory:	0
API conversion failed:	0
API image locked:	0
Driver out of buffers:	0
Driver device not ready:	0
USB transfer failed:	0
Device timeout:	0
Device buffer overrun:	0
Device missed images:	0
Device frame capture failed:	0
Total failures:	0

Reset Errors

#### Bandwidth

Max interface bandwidth:	380.0 MB/s
Peak camera bandwidth	399.0 MB/s

Settings OK Settings critical

#### Camera buffer info

Camera image buffers	0
Used	0
0% 100%	
Resend packets	0

Device temperature: 58.8° C (137.9° F) Close

# JARGY CO., LTD.

## Test Report

Model : CBL-HFD3igMBS-7m

Ver : 1.0

Date : 2016/2/15

Camera Brand Name : IDS

### Test Platform

Type	PC		
Model	ASRock Z170 Extreme4		
OS	Windows 7 Pro 64-bit		
CPU	Intel Core i5-6400		
HDD	SATA III 1TB		
RAM	DDR4 4GB		
USB 3.0	PCH 6 Ports(Intel Z170 Native)		


Tested Camera : UI-3370CP-C-HQ

Tested time : 237h





uEye Cockpit - UI337xCP-C ID: 1 - SerNo.: 4102781785

File View uEye Profiles Help

Host Performance

Frame Timing (only in DIB mode)

CPU load	39 %
FPS from Camera	80.9 fps
Max FPS possible by CPU	211.1 fps
Frame calculation time	4.7 ms
Frame delay time	12.4 ms

Timing Ratio 0.38

Settings OK Settings critical

Use OpenMP Default

Current software settings

Image size	2048 x 2048
Auto exposure	OFF
Auto white balance	ON
Auto gain	OFF
Edge enhancement	OFF
LUT	OFF
Gamma	OFF
Skip frames	
Auto exposure/gain	4
Auto white balance	4

Capture failures

API no destination memory:	0
API conversion failed:	0
API image locked:	0
Driver out of buffers:	0
Driver device not ready:	0
USB transfer failed:	0
Device timeout:	0
Device buffer overrun:	0
Device missed images:	0
Device frame capture failed:	0
Total failures:	0

Reset Errors

Bandwidth

Max interface bandwidth:	380.0 MB/s
Peak camera bandwidth:	399.0 MB/s

Settings OK Settings critical

Camera buffer info

Camera image buffers	0
Used	0
Resend packets	0

Device temperature: 59.9° C (139.9° F)

Close

BGRA8 (2048 x 2048) Frames: 69042321 Display: 26222653 Failed: 0 Recc Transfer: OK FPS: 80.91

# JARGY CO., LTD.

## Test Report

Model : CBL-HFD3igMBS-8m

Ver : 1.0

Date : 2015/12/28

Camera Brand Name : IDS

### Test Platform

Type	PC		
Model	GIGABYTE GA-Z170X-Gaming 3		
OS	Windows 10 Pro 64-bit		
CPU	Intel Core i5-6400		
HDD	SATA III 1TB		
RAM	DDR4 4GB		
USB 3.0	PCH 6 Ports(Intel Z170 Native)		


Tested Camera : UI-3370CP-C-HQ

Tested time : 91h



uEye Cockpit UI337xCP-C ID: 1 - SerNo.: 4102781785

File View uEye Profiles Help

Host Performance

Frame Timing (only in DIB mode)

CPU load	46 %
FPS from Camera	80.9 fps
Max FPS possible by CPU	206.6 fps
Frame calculation time	4.8 ms
Frame delay time	12.4 ms

Timing Ratio 0.39

Settings OK Settings critical

Use OpenMP Default

Current software settings

Image size	2048 x 2048
Auto exposure	OFF
Auto white balance	ON
Auto gain	OFF
Edge enhancement	OFF
LUT	OFF
Gamma	OFF
Skip frames	
Auto exposure/gain	4
Auto white balance	4

Capture failures

API no destination memory:	0
API conversion failed:	0
API image locked:	0
Driver out of buffers:	0
Driver device not ready:	0
USB transfer failed:	0
Device timeout:	0
Device buffer overrun:	0
Device missed images:	0
Device frame capture failed:	0
Total failures:	0

Reset Errors

Bandwidth

Max interface bandwidth:	380.0 MB/s
Peak camera bandwidth	399.0 MB/s

Settings OK Settings critical

Camera buffer info

Camera image buffers	0
Used	0
0%	100%
Resend packets	0

Device temperature: 57.3° C (135.2° F) Close

BGRA8 (2048 x 2048) Frames: 26541967 Display: 10491339 Failed: 0 Recc Transfer: OK FPS: 80.91

# JARGY CO., LTD.

## Test Report

Model : CBL-HFD3igMBS-10m

Ver : 1.0

Date : 2015/12/31

Camera Brand Name : IDS

### Test Platform

Type	PC		
Model	GIGABYTE GA-Z170X-Gaming 3		
OS	Windows 10 Pro 64-bit		
CPU	Intel Core i5-6400		
HDD	SATA III 1TB		
RAM	DDR4 4GB		
USB 3.0	PCH 6 Ports(Intel Z170 Native)		


Tested Camera : UI-3370CP-C-HQ

Tested time : 72h



uEye Cockpit UI337xCP-C ID: 1 - SerNo.: 4102781785

File View uEye Profiles Help

Host Performance

Frame Timing (only in DIB mode)

CPU load	39 %
FPS from Camera	80.9 fps
Max FPS possible by CPU	206.8 fps
Frame calculation time	4.8 ms
Frame delay time	12.4 ms

Timing Ratio 0.39

Settings OK Settings critical

Use OpenMP Default

Current software settings

Image size	2048 x 2048
Auto exposure	OFF
Auto white balance	ON
Auto gain	OFF
Edge enhancement	OFF
LUT	OFF
Gamma	OFF
Skip frames	
Auto exposure/gain	4
Auto white balance	4

Capture failures

API no destination memory:	0
API conversion failed:	0
API image locked:	0
Driver out of buffers:	0
Driver device not ready:	0
USB transfer failed:	0
Device timeout:	0
Device buffer overrun:	0
Device missed images:	0
Device frame capture failed:	0
Total failures:	0

Reset Errors

Bandwidth

Max interface bandwidth:	380.0 MB/s
Peak camera bandwidth	399.0 MB/s

Settings OK Settings critical

Camera buffer info

Camera image buffers	0
Used	0
0%	100%
Resend packets	0

Device temperature: 59.6° C (139.3° F) Close

BGRA8 (2048 x 2048) Frames: 21116348 Display: 8347803 Failed: 0 Recor Transfer: OK FPS: 80.91